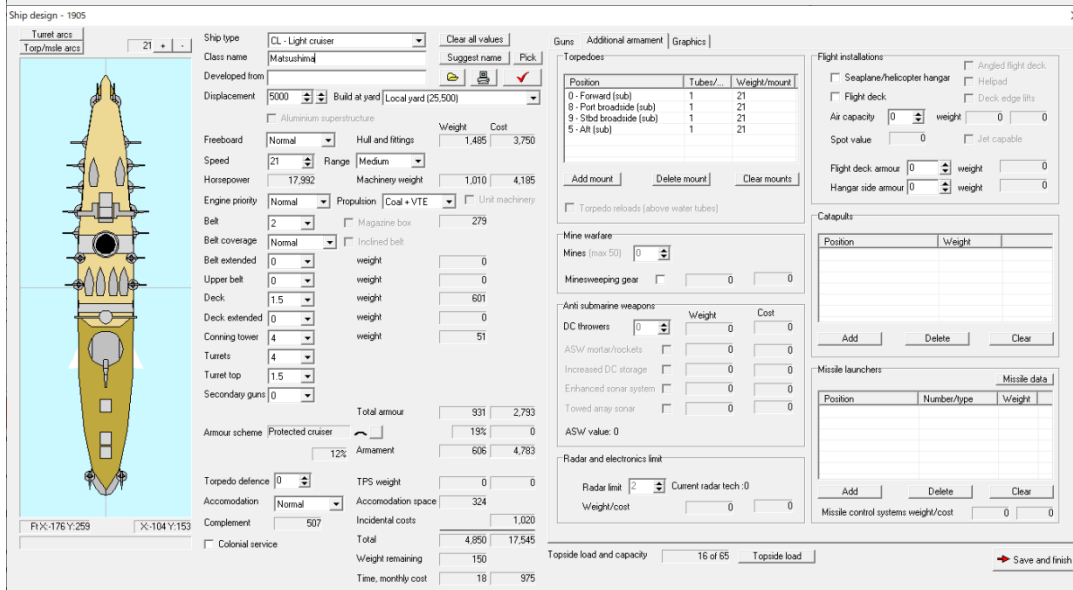
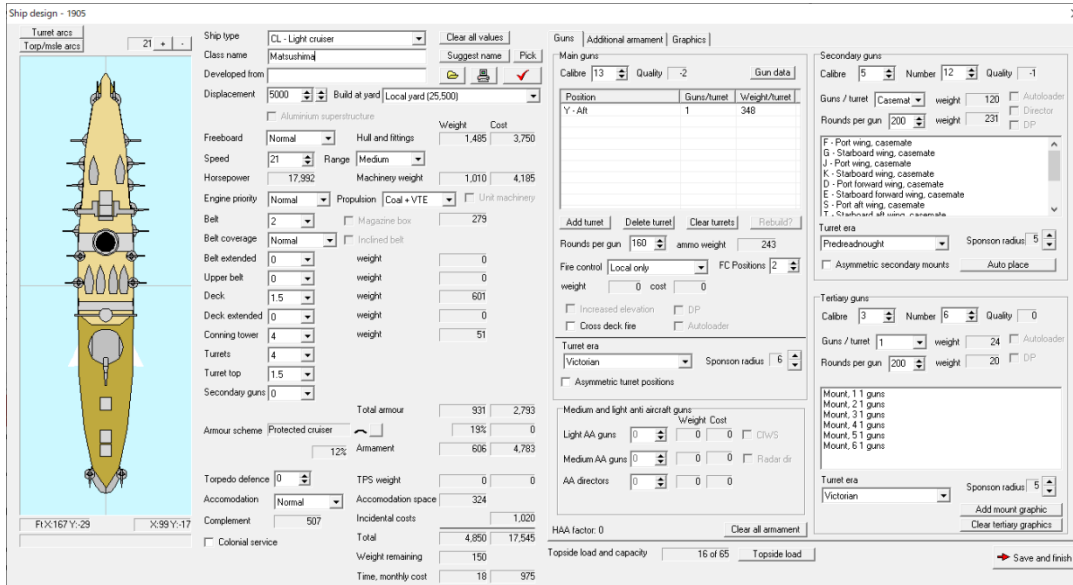


From: sanka
 Sent: Mon, 12 Feb 2024 01:50:42 +0900
 To: rtw3contest@gmail.com
 Subject: Ship Design Contest 2

Hello.
 I am delighted to be taking part in the contest.



Category 1 Matsushima class protected cruisers

It is fitted with one huge main gun, but this is merely a decoration.

Naval designers who wanted to mount a large number of 5-inch guns realised that it was easier and easier to add a secondary gun than to add a main gun.

She fought on the battlefield with a large number of 5-inch guns and served the Navy by showing off her 13-inch guns in gunboat diplomacy.

(巨大な主砲を一基装備しているが、これは単なる飾りである。多数の5インチ砲を搭載したい海軍設計者は、主砲を追加するよりも副砲を追加の方が簡単で簡単であることに気づきました。彼女は戦場で多数の5インチ砲を使って戦い、砲艦外交では13インチ砲を披露して海軍に貢献しました。)

Ship design - 1970

Ship type: CA - Heavy cruiser
Class name: Myoko
Developed from: 10% change, Myoko
Displacement: 4500 (Local yard 71,000)

Freeboard: Normal
Speed: 30
Horsepower: 76,708
Engine priority: Normal
Belt: 5
Belt coverage: Normal
Belt extended: 2
Upper belt: 0
Deck: 2
Deck extended: 2
Conning tower: 8
Turrets: 6
Turret top: 25
Secondary guns: 2

Weight/Cost breakdown:
Hull and fittings: 2,965 / 11,776
Machinery weight: 2,523 / 12,306
Magazine box: 1,721
Inclined belt: 104
Upper belt: 0
Deck: 1,491
Deck extended: 233
Conning tower: 160
Total armour: 3,709 / 11,127
Amour scheme: All or nothing (26% / 0)
18% Amourment: 2,602 / 16,515
TPS weight: 516 / 1,032
Accommodation space: 590
Complement: 760
Total: 14,096 / 58,834
Weight remaining: 404
Time, monthly cost: 31 / 1,898

Guns: Additional armament | Graphics | Main guns
Calibre: 5 | Quality: 1
Position: A - Forward (2, 409), Y - Aft (2, 409), B - Forward superimposed (2, 500)
Rounds per gun: 130, ammo weight: 278
Fire control: Electro optical director (2), weight: 72, cost: 1,600
Turret era: Late dreadnought, Sponson radius: 0
Medium and light anti aircraft guns: Light AA guns (2, 16, 32), Medium AA guns (3, 25, 50), AA directors (2, 60, 240)

Ship design - 1970

Ship type: CA - Heavy cruiser
Class name: Myoko
Developed from: 10% change, Myoko
Displacement: 4500 (Local yard 71,000)

Freeboard: Normal
Speed: 30
Horsepower: 76,708
Engine priority: Normal
Belt: 5
Belt coverage: Normal
Belt extended: 2
Upper belt: 0
Deck: 2
Deck extended: 2
Conning tower: 8
Turrets: 6
Turret top: 25
Secondary guns: 2

Weight/Cost breakdown:
Hull and fittings: 2,965 / 11,776
Machinery weight: 2,523 / 12,306
Magazine box: 1,721
Inclined belt: 104
Upper belt: 0
Deck: 1,491
Deck extended: 233
Conning tower: 160
Total armour: 3,709 / 11,127
Amour scheme: All or nothing (26% / 0)
18% Amourment: 2,602 / 16,515
TPS weight: 516 / 1,032
Accommodation space: 590
Complement: 760
Total: 14,096 / 58,834
Weight remaining: 404
Time, monthly cost: 31 / 1,898

Torpedoes:
Position: Tubes/Weight/mount
T Torpedo reloads (above water tubes)

Mine warfare:
Mines (max 0): 0
Minesweeping gear: 0

Anti submarine weapons:
DC throwers: 0
ASW mortar/rockets: 0
Increased DC storage: 0
Enhanced sonar system: 0
Towed array sonar: 0
ASW value: 5

Radar and electronics limit:
Radar limit: 6, Current radar tech: 5, Weight/cost: 200 / 200

Flight installations:
Sesplane/helicopter hangar, Angled flight deck, Helipad, Flight deck, Deck edge lifts, Air capacity: 2, weight: 334 / 334, Spot value: 0, Jet capable, Flight deck amour: 0, weight: 0, Hangar side amour: 0, weight: 0

Catapults:
Position: Weight

Missile launchers:
Missile data:
Position: Number/type Weight
D - Port forward wing: 3 (1)H SSM 68
E - Starboard forward...: 3 (1)H SSM 68
W - Aft centreline: 2 (35)M SAM 870
Missile control systems weight/cost: 228 / 570

Category 2 Myoko class heavy cruisers

It has been in active service for nearly 40 years since its commissioning in 1933.

She has fought in more than 10 naval battles and has been refitted 5 times.

When her missiles were introduced, they considered decommissioning her, but the marshal, who

liked the ship, forced her to convert it into a missile cruiser, so she is scheduled to remain in service for another 10 years.

(1933年の就役以来、40年近く現役を続けている。

10回以上の海戦を戦い、5回の改装を経験している。

ミサイルが導入された際には退役も検討されたが、艦を気に入った元帥がミサイル巡洋艦への改装を強行したため、あと10年は現役を続ける予定だ。)

name sankasanka

e-mail sanka.mk.b.1@gmail.com